

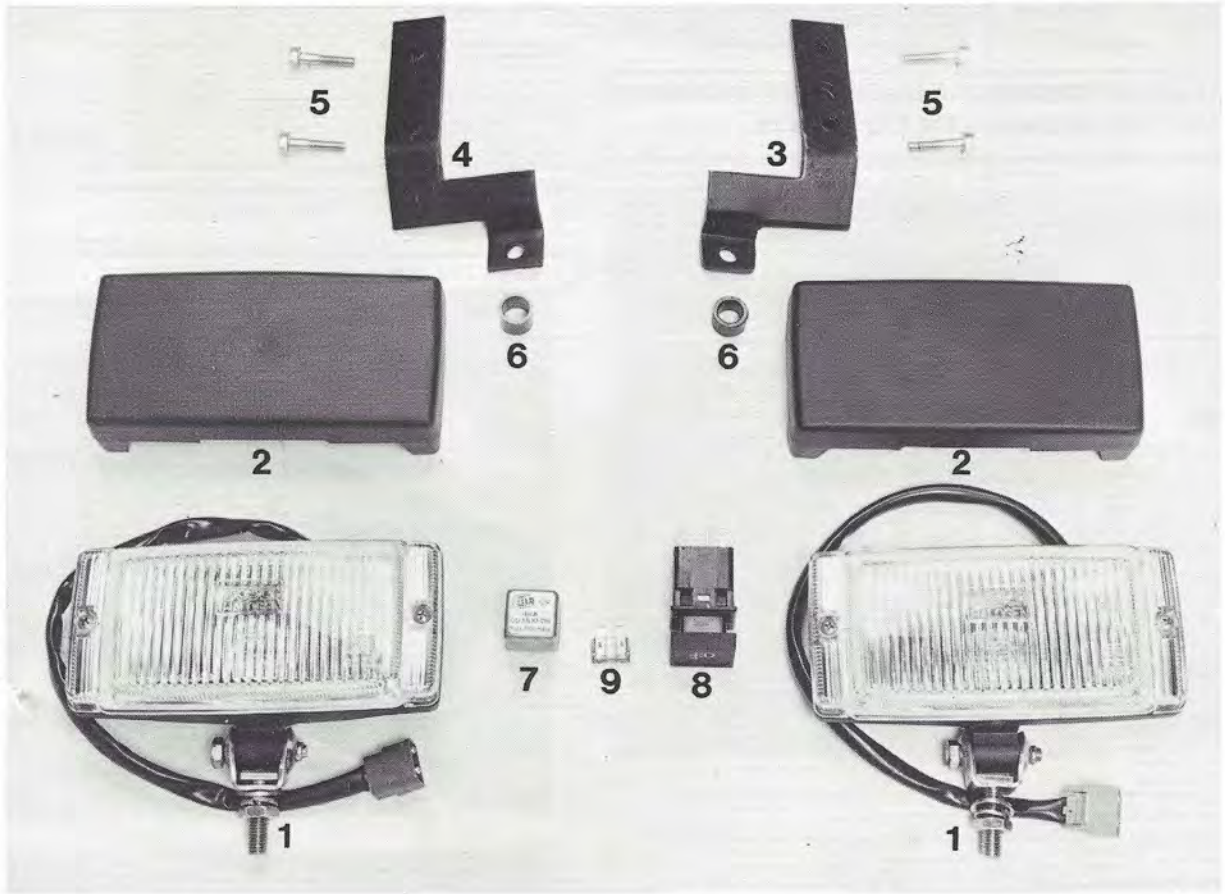


Saab 900 M87-

ART NO 207 817 008 02 46 116 (U.S.)	GROUP 3:51-12	DATE Jun 88
REPLACES/REPLACE/ERSETZT/ERSÄTTER		

Fog light kit, Bosch Pilot 150

INSTALLATION INSTRUCTIONS • INSTRUCTIONS DE MONTAGE • MONTAGEANLEITUNG • MONTERINGSANVISNING



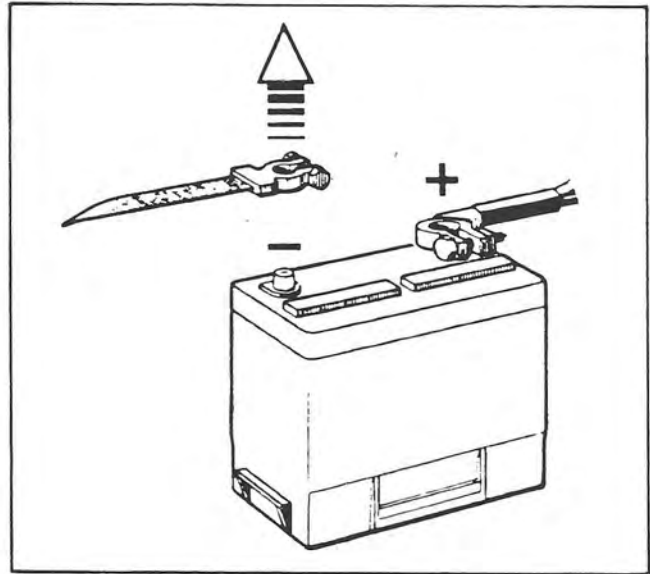
Pos	Quantity	Spare Part No
1 Fog light assy. with bulb and wiring	2	02 46 041
- Lens/reflector	-	02 46 058
- Bulb	-	02 80 354
2 Cover	2	02 46 066
3 Bracket L	1	02 46 074
4 Bracket R	1	02 46 082
5 Flange bolts M6x30	4	
6 Spacer	2	
7 Relay	1	85 22 310
8 Fog light switch	1	95 23 762
9 Fuse 15 Amp.	1	79 74 645
Installation instructions		

69 32 34 TP information. Österbergs Nyköping. © Saab-Scania AB 1988



1

- Disconnect the negative battery terminal.



2

Install the brackets and the foglights according to the instructions in the bracket kits.

Install relay

3

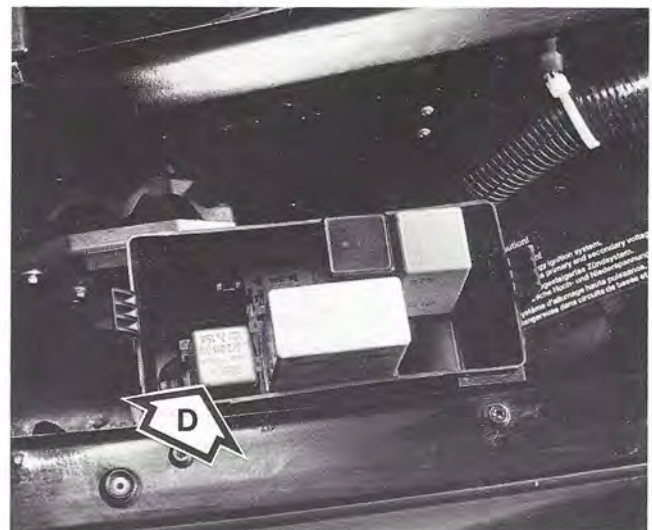
Only 16-valve cars

- Install relay in position "G" of the fuse box.



Only 8-valve cars

- Install relay in position "D" of the emissions relay panel located on the front left inner fender just ahead of the fuse box.



Install switch

4

- Remove dummy switch blank from location just below headlight switch.
- Plug the fog light switch into the pre-wired socket provided in the dashboard and snap the switch into place.

NOTE! In order to gain access to the fog light switch wiring, it may be necessary to remove the knee pad under the dash.



Install fuse

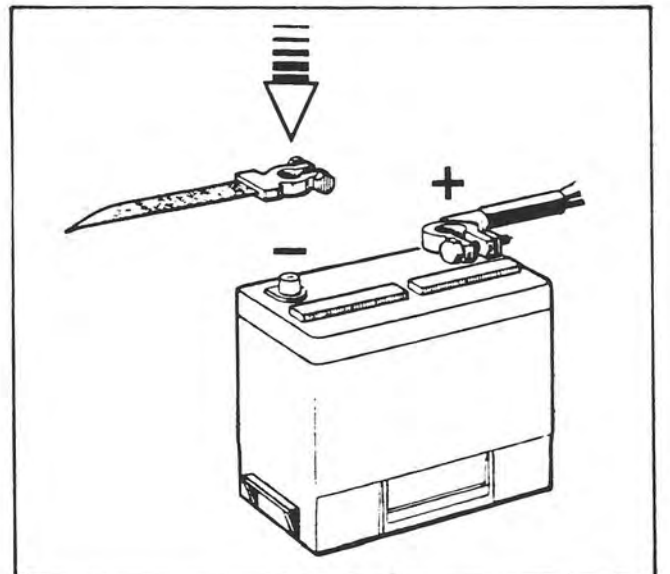
5

- Install a 15 amp fuse in position No 21.

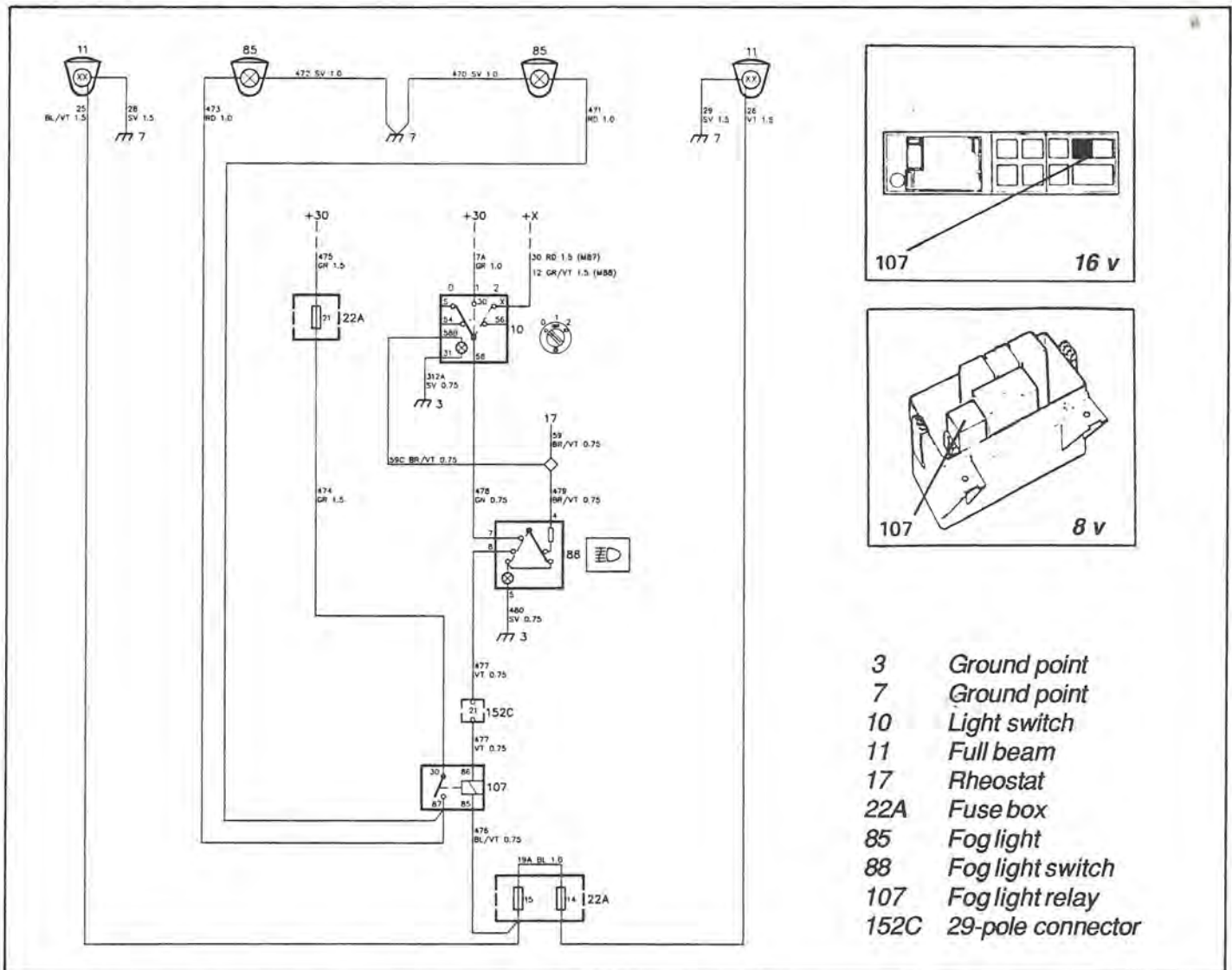


6

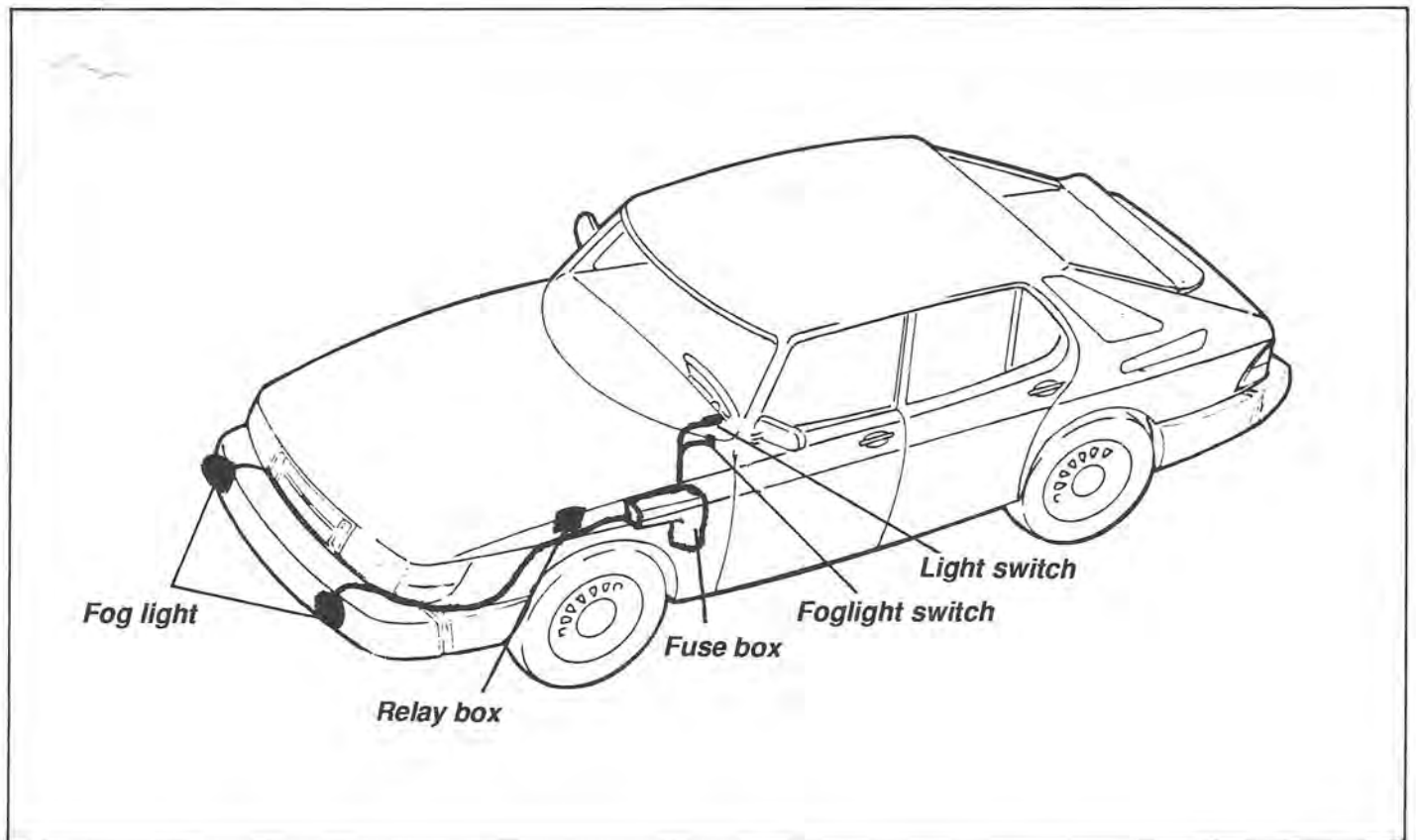
- Reconnect battery terminal.



Wiring diagram



Components



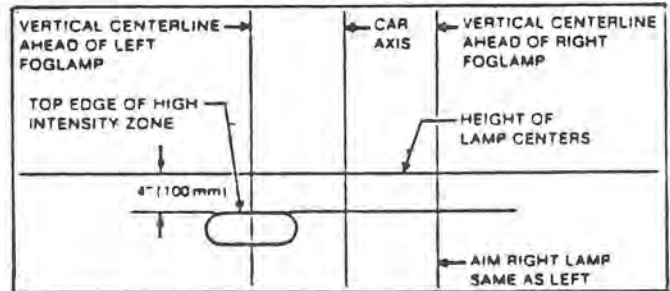
Test lights

With the parking lights or low beams on, the fog lights should light when the switch is activated. When the high beams are turned on the fog lights should automatically be cancelled. The fog lights should reactivate as soon as the headlights are dipped from high beam.

Note! If both the high beam filaments are burned out, it would cause the fog lights not to work. If the high beam fuses 14 and 15 are blown, the fog lights also will not work.

Aiming fog lights

Correct focusing of fog lights is a required part of the initial installation procedure. Fog lights are of limited value if the focus is incorrect. The chart reproduced here shows the optimum and correct positioning (focus) of the fog light high intensity zone relative to the horizontal and vertical centers of the fog lamp at a distance of 25 feet (7.6 meters) in front of the car. The fog lights should be adjusted so that the top of the high intensity zone is four inches (100 mm) below the horizontal center of the fog lamp.



The vertical center of the high intensity zone should fall on the vertical centerline of the fog lamp and under no circumstances be more than six inches (150 mm) to either side of the vertical centerline of the fog lamp.