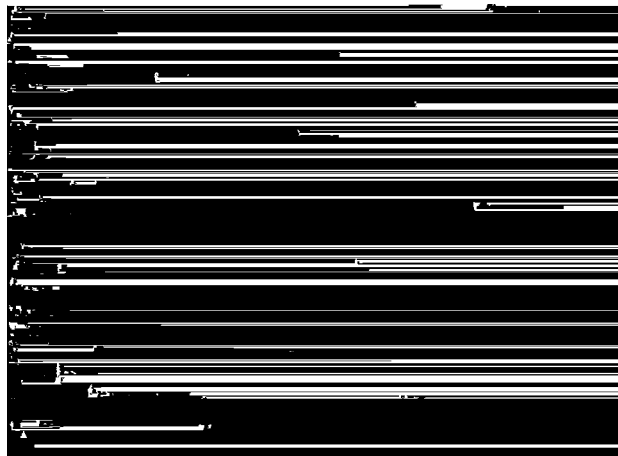


# Rear screen

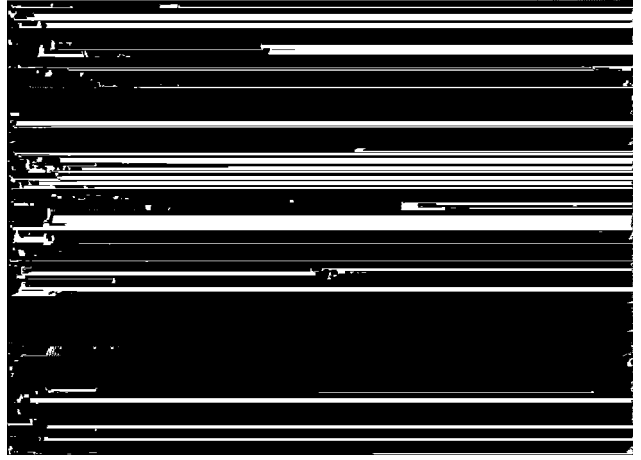
## To remove

To ensure that the rear screen remains positioned equidistant from either side, the complete screen assembly, including the panel secured by a zip to the no. 4 top-frame crossmember, must be replaced.

- 1 Remove the spoiler assembly (see page 830-1).
- 2 Fit the spacers, part no. 82 92492 or 82 92 799, as appropriate, in the wind-screen frame.



- 3 Engage the latching hooks but do not close the latching handles.

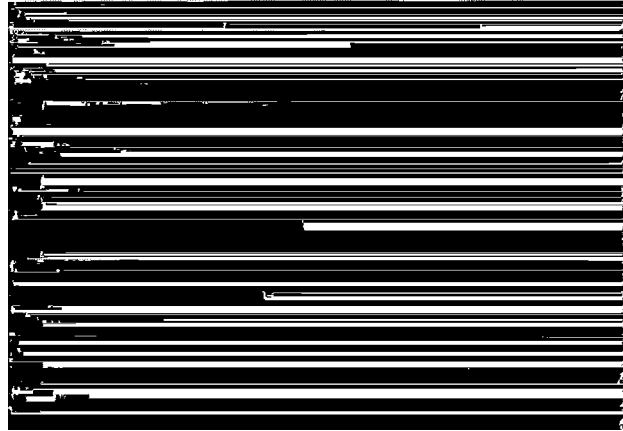


- 4 Remove the finisher from the tail edge of the top cover.

- 5 Remove all the staples from the tail edge of the cover.

- 6 Remove the feature strip end caps from the no. 4 crossmember.

7 Remove the feature strip.



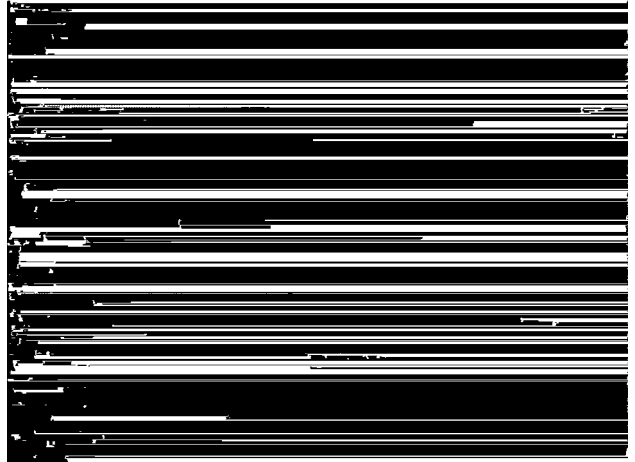
8 Mark the ends of the aluminium retainer strip to show which is left and which is right, and remove the strip retainer.

9 Remove the staples from the no. 4 cross-member.

10 Fold back the top cover and mark the position of the stay pad. Remove the staples securing the stay pad to the no. 4 crossmember.

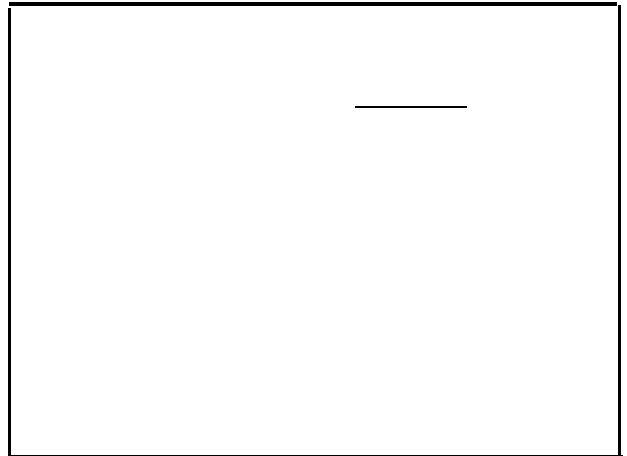
11 Remove the staples holding the top panel of the rear screen to the no. 4 cross-member.

- 12 Unzip the fastener and release the strap for the rear screen. Unplug the electrical connector from the screen and pull the leads out of the fabric.



### To fit

- 1 Using a setsquare, mark the screen centre, as shown.



- 2 Mark the midway position along the no. 4 crossmember. This should be in line with the retaining screw for the strap.



- 3 Unzip the fastener on the new screen.

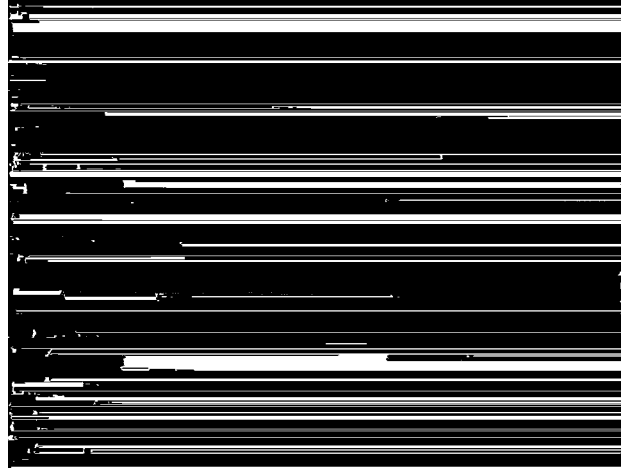
- 4 Align the top panel of the rear screen with the mark on the no. 4 crossmember. The top edge of the panel must also be aligned with the forward edge of the no. 4 crossmember. Staple the panel into position.

---

**Note**

The long staples, part no. 69 34 285, are used for stapling two or more layers of fabric. The short staples, part no. 69 35 712, are used when only one layer of fabric needs to be stapled.

---



- 5 Line up the stay pad with the marks and staple it onto the no. 4 crossmember.

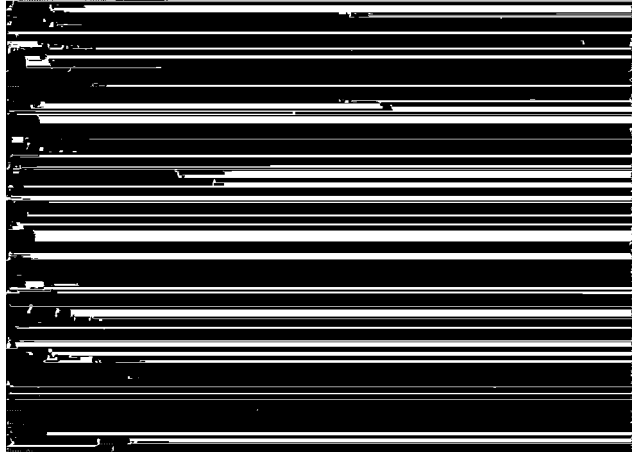
- 6 Place a protective cover over the luggage-compartment lid.

- 7 Feed the electrical leads through the panel and plug in the connector.

- 8 Hang the rear screen from the strap and close the zip.

- 9 Fold the top cover back down over the no. 4 crossmember.

Stretch the panel fabric by pulling it down, aligning the notch with the hole in the luggage-compartment lid. Fix the panel in position by means of a couple of staples.



- 10 Stretch the bottom flaps on either side and staple them in position.

- 11 Remove the staples from the middle of the panel, stretch the panel again and secure by means of a couple of staples.

- 12 Staple the rear panel and side flaps into position, working outwards from the middle.

13 Trim off the surplus fabric. if the fabric is of Cambria make, fuse the edges by means of a heat gun to prevent their fraying.

14 Pull the stay pads tight and staple them in position.

15 Centre the top cover by inserting a drift in the hole in the middle of the no. 4 crossmember. Stretch the cover by pulling it down, towards the rear of the car, and fix it in position by means of a couple of staples.

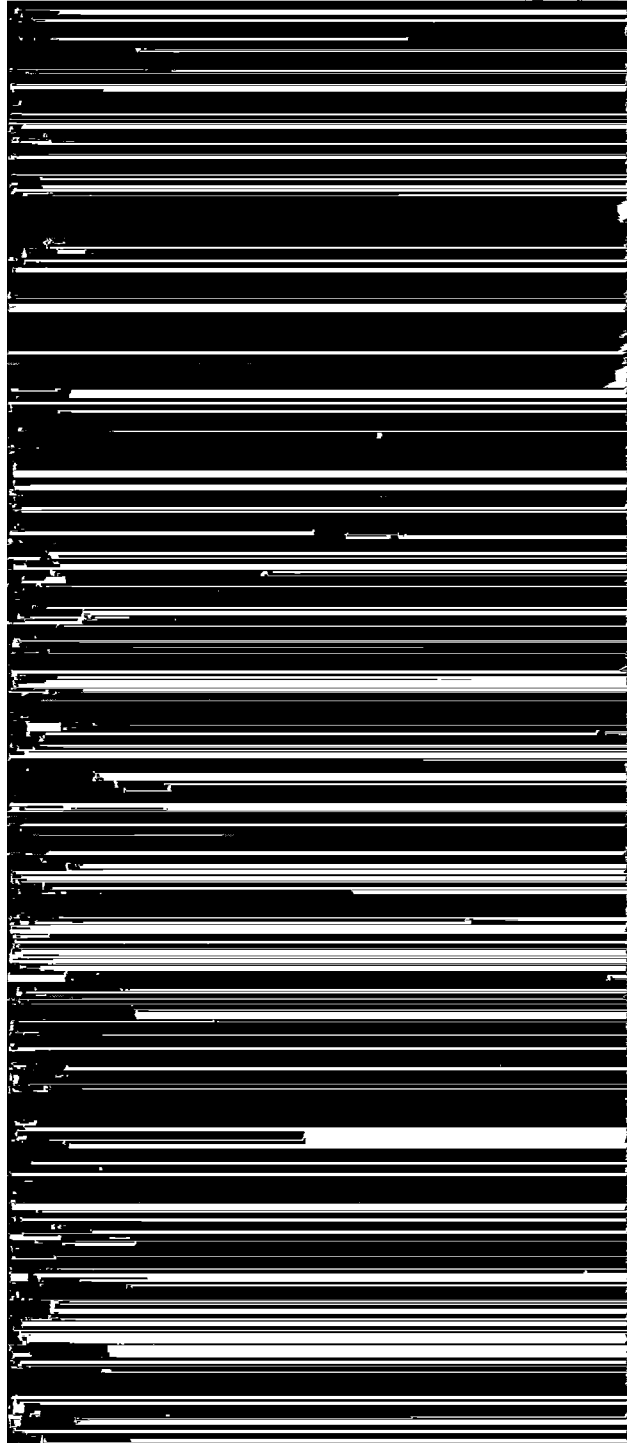
---

**Note**

To ensure that the top cover is not pulled out of alignment, carry out each of the following steps (up to and including step 25) on both sides of the car before going on to the next step.

---

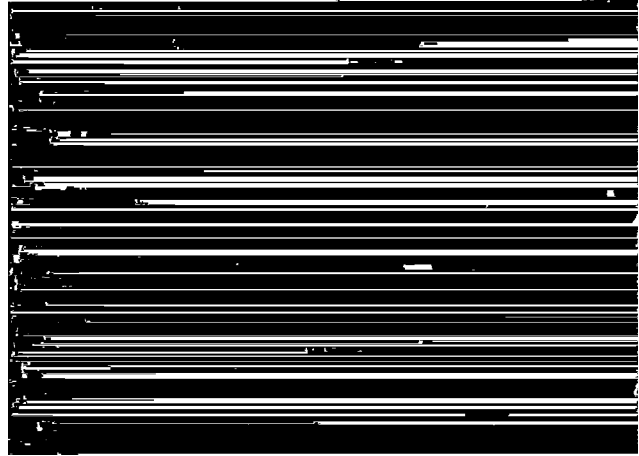
16 Stretch the top cover side panels, ensuring that the edges are parallel to the edges of the rear panel.  
Fix the panels in position by means of a couple of staples.





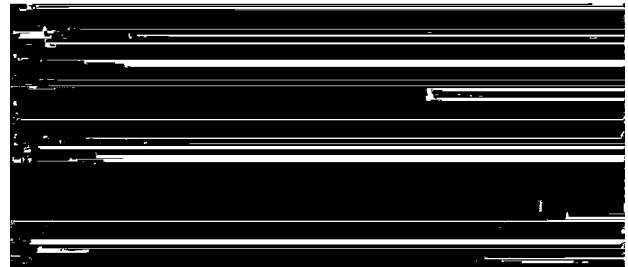


- 21 Stretch the cover towards the rear on either side. Staple the fabric at the outboard ends of the no. 4 crossmember, outboard of the seams.



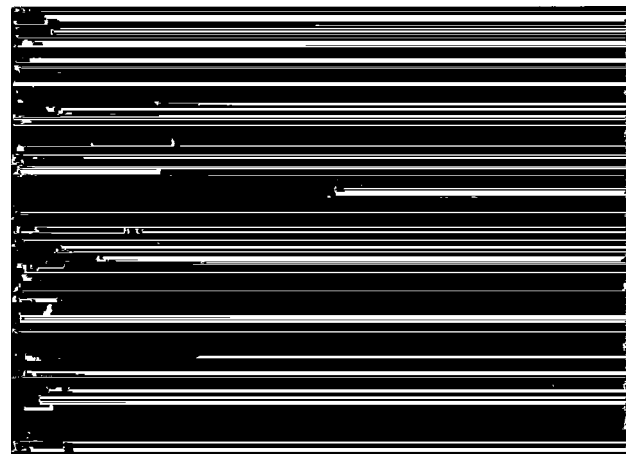
- 22 Remove the staples from the side panels, restretch the fabric and staple in position using a couple of staples.

- 23 Pull down the top cover side flaps to stretch them and staple the front part of the side flaps in position. Do not staple in the holes in the stretcher.

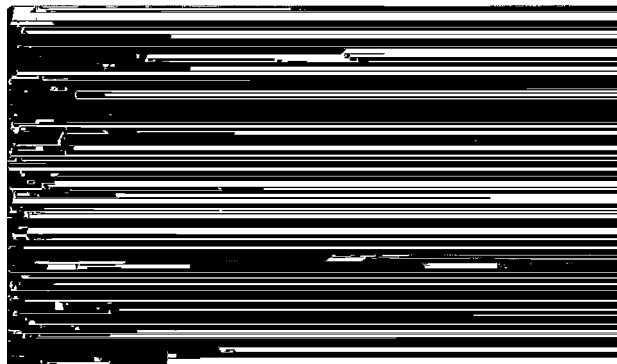


S 8165

- 24 Pull down and stretch the inner fabric, and staple it in position.



- 25** Pull down and stretch the side flaps, stapling them in the order shown.

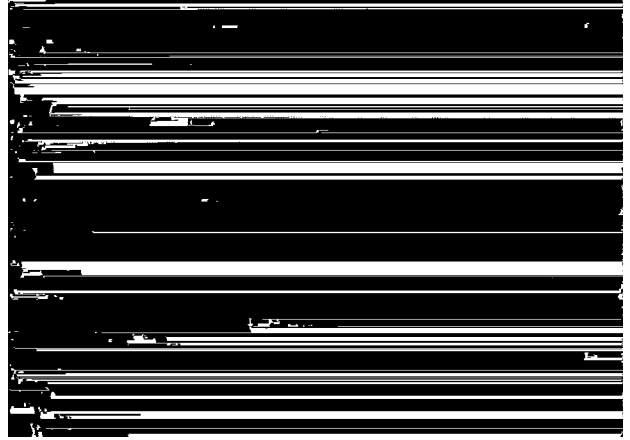


- 26** Apply a bead of adhesive along the line of staples in the no. 4 crossmember.

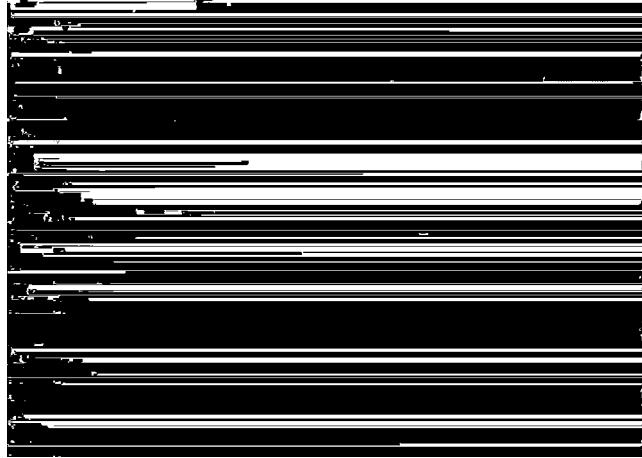
- 27** With the left and right marks correctly orientated, screw the feature-strip retainer into place on the no. 4 crossmember.

- 28** Apply a bead of adhesive along the retainer.

- 29 Press the feature strip into position and screw on the end caps.



- 30 Trim the edges to remove surplus fabric.



- 31 Remove the spacers from the windscreen frame and raise the top assembly.

Check that the top comes to rest 20 - 30 mm from the windscreen frame.

If adjustment is necessary, see page 800-4.

20-30mm

Check the adjustment of the latching hooks by latching the top in position and then pressing down on the front corners of the top. No play should be present.

If adjustment is necessary, see page 800-5.



## 812-36 Top assembly

---

**32 Secure the side panels of the headlining by means of the Velcro fasteners.**



**33 Fit the spoiler assembly (see section 830).**